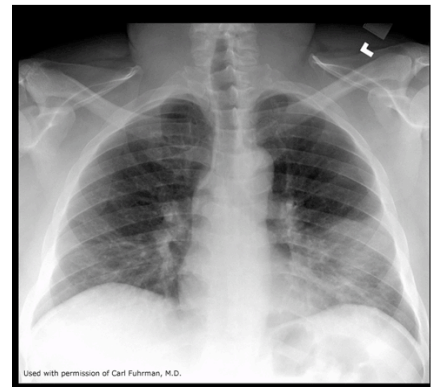


Introducing CORE Case-based Online Radiology Education, iInTIME's virtual patient program for medical students studying Radiology, available for subscription since July 2011, includes 15 interactive virtual patient cases which encompass the learning objectives of the Alliance of Medical Student Educators in Radiology (AMSER) National Medical Student Radiology Curriculum. Additional cases are being developed.

CORE cases teach a patient-centered approach to imaging, foster self-directed and independent study and build clinical problem-solving skills. They utilize the American College Radiology (ACR) Appropriateness criteria to teach an evidence-based approach to imaging and link to excellent interactive Radiology resources on the web.

These cases can be used as a stand-alone Radiology course during a Radiology clerkship or elective, or incorporated into the appropriate clinical clerkships. For example, studying Women's Imaging cases during the OBGYN clerkship and Neuroimaging cases during the Neurology clerkship teaches imaging when students can directly apply the concepts to their clinical experience.



CORE Editorial Board (AMSER members)

Editor-in-Chief

Petra Lewis, M.B., B.S. (Dartmouth Medical School)

Associate Editors

Carl Fuhrman, M.D. (University of Pittsburgh)

Sravanthi Reddy, M.D. (University of Southern California)

Erin O'Connor, M.D. (Temple University School of Medicine)

Laura Avery, M.D. (Massachusetts General Hospital)

CASUS ? Help x Close Preview

Expert Clipboard Back Forward Card 1 of 16 | Plain films: Mr. Barrone

While Ms. Reynolds is being hemodynamically stabilized by the emergency room team, Mr. Barrone remains stable and is taken for imaging. It is crucial for trauma patients to have a pelvic x-ray obtained quickly as pelvic fractures are a main cause of hidden blood loss.

See the **Expert** to learn more about what to look for when interpreting emergency radiographs.

Question

Mr. Barrone's antero-posterior (AP) pelvis film is shown on the right. What fractures does he have? Please check all that you can identify.

Multiple Choice Answer:

Expert answer is displayed in green color.

A Vertebral pedicle

B Vertebral transverse process

C Sacral ala

D Acetabular

Image 1 of 1

To see a **DEMO** CORE case, go to http://www.med-u.org/virtual_patient_cases/demos and follow the instructions to select the CORE case. For a **FREE TRIAL** of CORE, contact medusubscriptions@i-intime.org.



CORE

Case List

- 1 Chest: Infection
- 2 Chest: Masses
- 3 Chest: Trauma
- 4 Chest: Vascular
- 5 GI: Inflammatory bowel disease
- 6 GI: Hepatobiliary
- 7 GI: Renal/GU
- 8 GI: Trauma
- 9 Neuro: Trauma
- 10 Neuro: Vascular and HIV
- 11 Pediatrics A
- 12 Pediatrics B
- 13 MSK: Arthritis, osteomyelitis
- 14 Woman's imaging: Pregnancy and infertility
- 15 Woman's imaging: Malignancy and screening

More about CORE

In medical school, radiology is conventionally taught within clerkships, electives or a lecture series. This 'modality' based (e.g. 'interpretation of CXRs'), or topic/disease based (e.g. 'radiation risks', 'imaging in pregnancy') approach generally results in radiology being taught in isolation from a patient-centered environment. The design rationale for CORE was to simulate radiology in clinical situations by incorporating imaging into 'virtual' patient cases using a web based format. These cases allow students during 3rd or 4th year clerkships to study radiology in a more realistic setting. Many students currently use CLIPP, SIMPLE, fmCASES, and WISE-MD, companion virtual patient cases available through MedU.

CORE cases offer interactive student learning opportunities through Q&A format, annotated images, and hyperlinks to additional graphic and web learning resources.

In January 2011, the Journal of the American College of Radiology published a study on integrating radiology into clinical clerkships using CORE. (J Am Coll Radiol 2011;8:58-64).

CASUS[®] ? Help x Quit

Expert Clipboard Back Forward Card 5 of 16 | Chest CT - Ms. R

After seeing Ms. R's CXR, you decide that she clearly needs a Chest CT scan. [Do you recommend using intravenous contrast?](#) [What about oral contrast?](#)

Ms R's CXR is repeated here with selected images from her Chest CT shown on images 2-4. Take a look.

*Aortic injury is covered in Chest Case 3

Here are some additional examples of CT scans with contrast from other patients with traumatic chest injuries.

[Chest CT scan #1](#)

[Chest CT Scan #2](#)

Image 1 of 4

★ **CORE is available through MedU's individual and institution-wide subscriptions. Subscription information and instructions are available at <http://www.med-u.org/subscriptions>.**

MedU

The Institute for Innovative Technology In Medical Education (iInTIME), through MedU, meets its mission by collaborating with medical educators to develop and distribute virtual patient cases as well as other premier online medical educational programs consistent with iInTIME's educational philosophy. These medical education programs harness the power of collaborative medical knowledge and are designed to supplement traditional clerkship teaching and patient care activities with the third-year medical student in mind.

Over 130 medical schools in the United States and beyond currently subscribe to CORE (Radiology), CLIPP (Pediatrics), SIMPLE (Internal Medicine), fmCASES (Family Medicine) and WISE-MD (Surgery). To see if your institution currently subscribes to one of our courses, visit <http://www.med-u.org/cart/subs>

For more information about MedU virtual patient cases and associated teaching tools, please visit www.med-u.org.